



IHE

Aktuelle Entwicklungen

B. Wein

IHE-D user-cochair



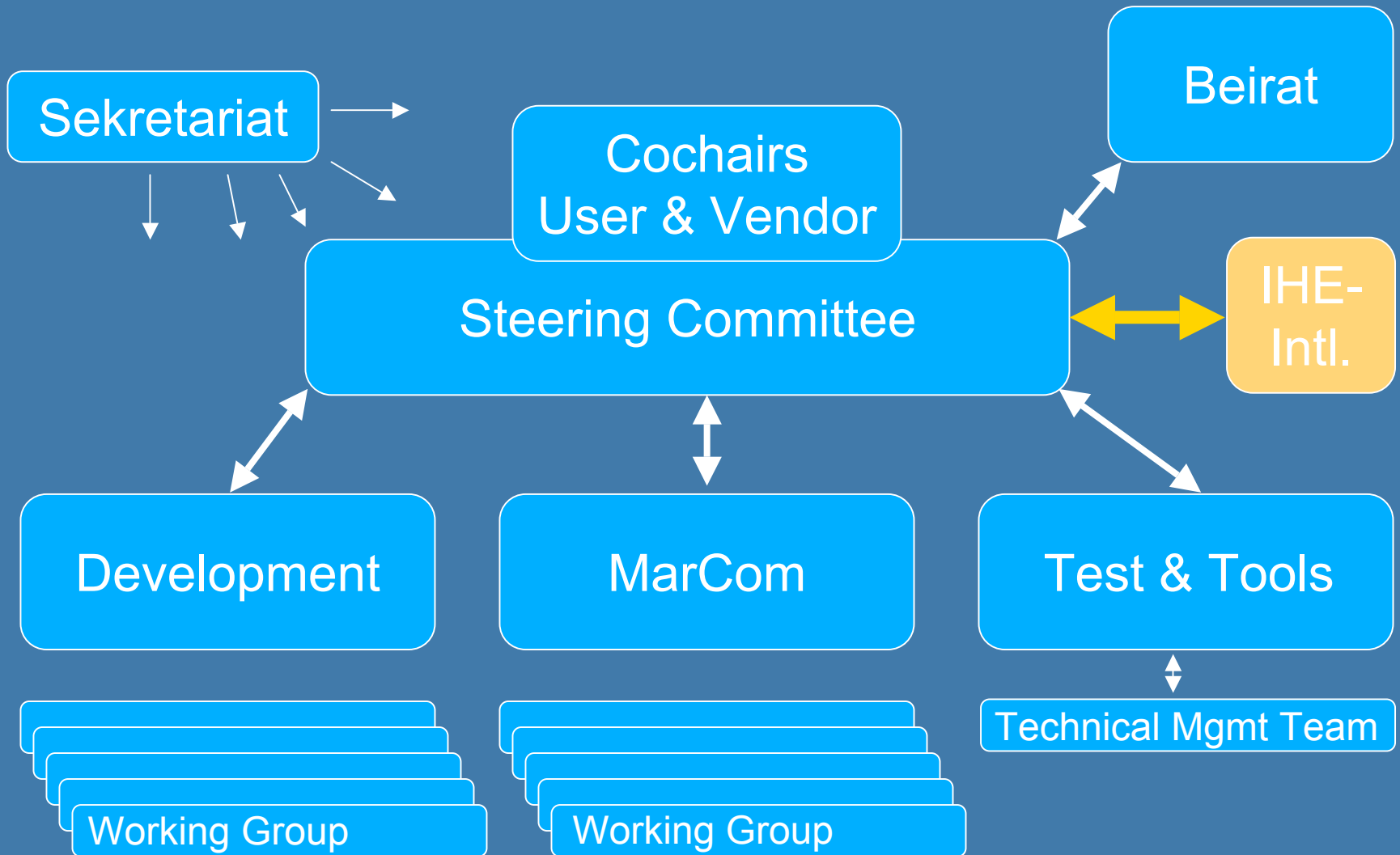
Überblick

- Organisation (IHE-EUR)
- Domänen (Übersicht)
- Integrationsprofile (RAD und ITI)
- Sonstiges (IHE-D Infotag)

IHE-Europe

- **Änderung des Status von IHE-EUR**
 - Ziel: eigene rechtliche Identität
 - Neuordnung der Ausschüsse
 - Neuordnung der Mitglieder
 - Definition der „intellectual property rights“
 - Einbindung in die globale Initiative

IHE-Europe



IHE-Europe

● Mitglieder

- Cochairs User & Vendor IHE-EUR
- Cochairs User & Vendor IHE-national
- Cochairs Subcommittees
- Vendors' Organisations
- Connectathon participating Vendors
- Connectathon non-participating Vendors
- Users', Patients', Payers' Organisations
- Single User (IHE-related)
- Neu: User können eine Erstattung der Reisekosten beantragen.

Länder

America

Europe

Asia &
Ocea-
nia

OXFORD
CAT 2008

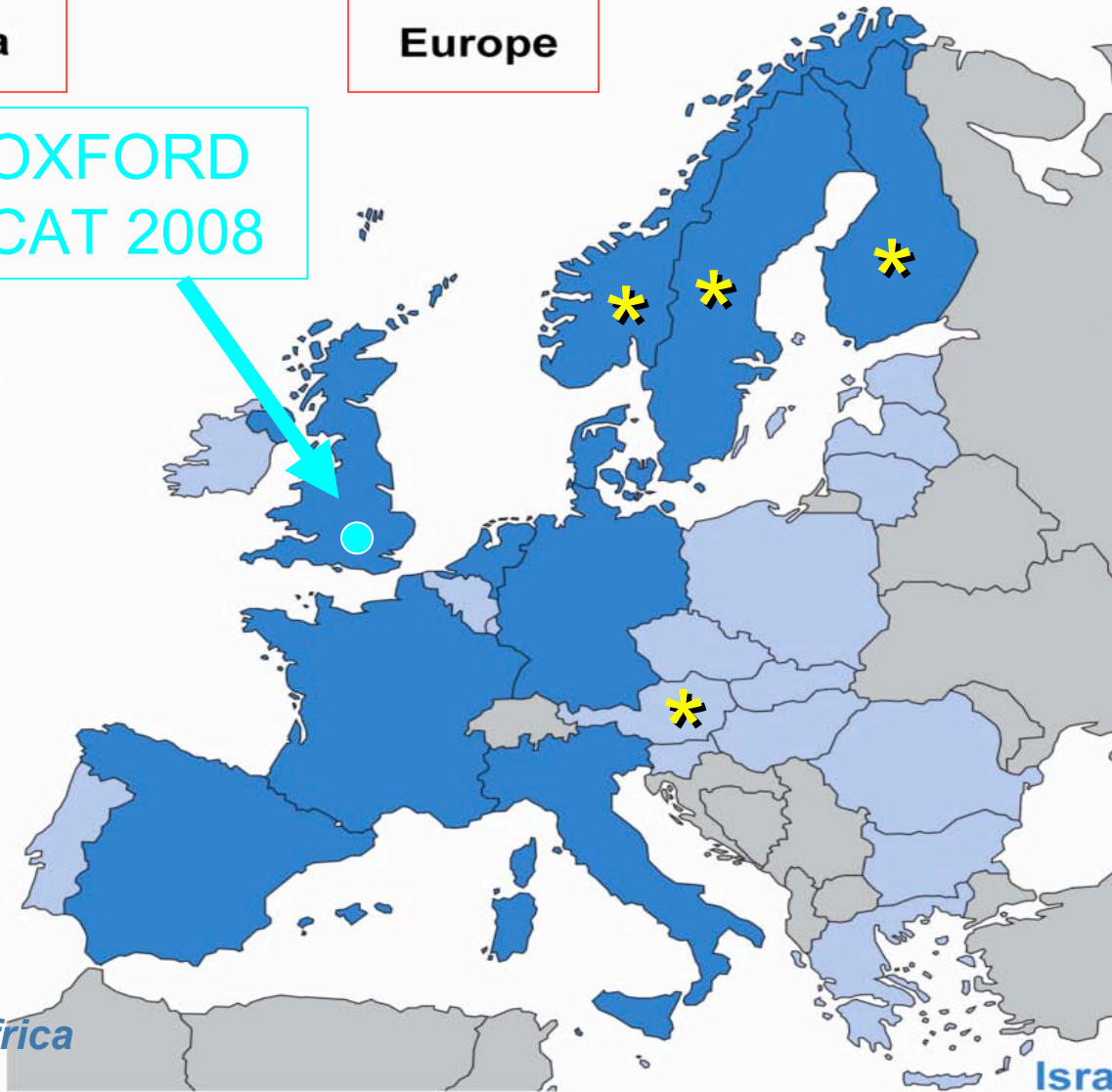
USA
Canada

Japan
China
Korea

Austra-
lia

Uruguay
South Africa

Israel



Domänen

Veterinarian

Endoscopy

Eye Care

Pharmacy

Pathology

Patient Care-Devices

Patient Care Coordination

Radiation Oncology

Laboratory

Cardiology

IT Infrastructure for Healthcare

Radiology

Year 1 (1999)

Year 2 (2000)

Year 3 (2001)

Year 4 (2002)

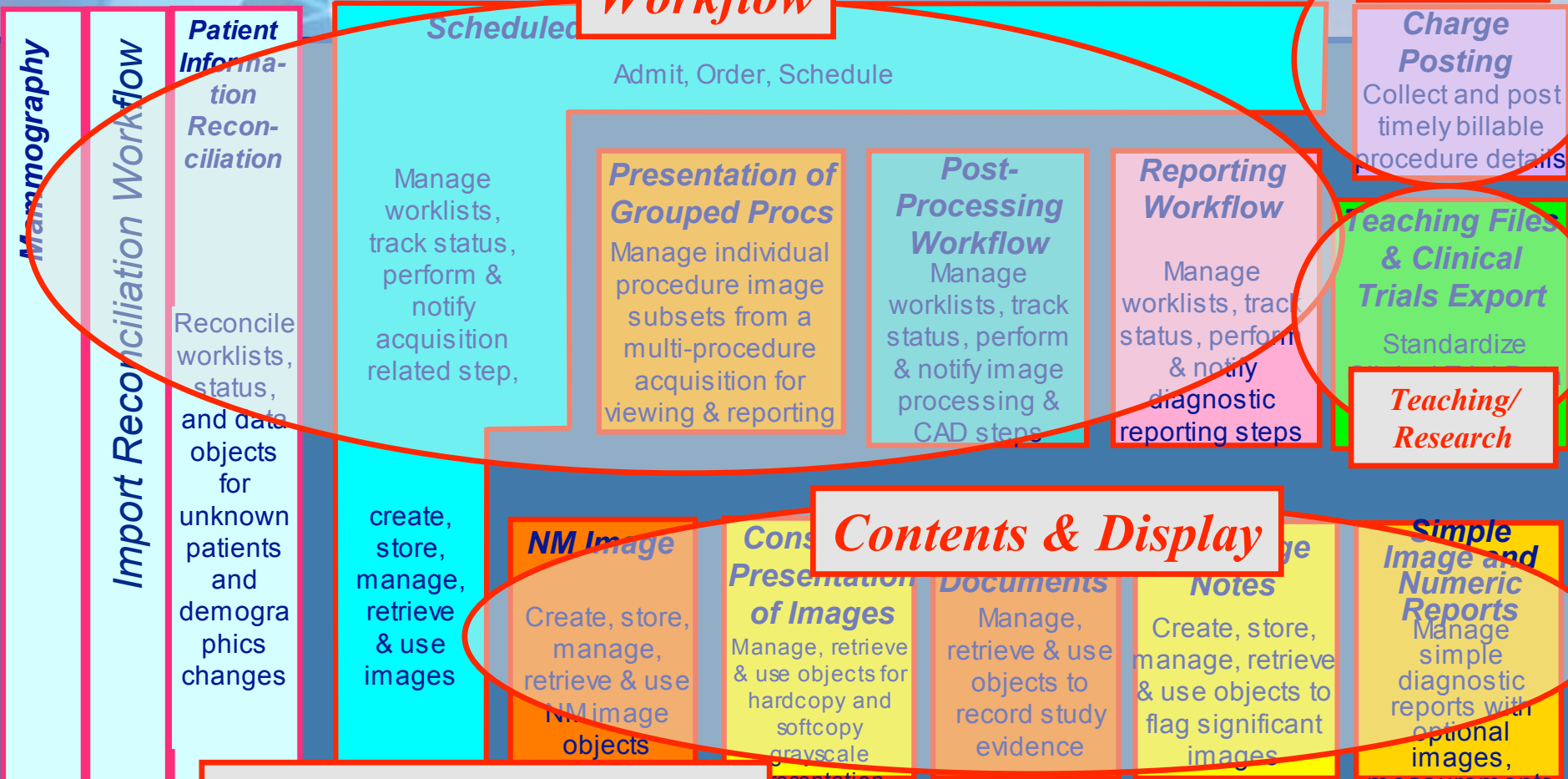
Year 5 (2003)

Year 6 (2004)

Year 7 (2005)

Year 8 (2006)

IHE Radiology Integration Profiles



Workflow

Scheduled

Admit, Order, Schedule

Manage worklists, track status, perform & notify acquisition related step,

Presentation of Grouped Procs

Manage individual procedure image subsets from a multi-procedure acquisition for viewing & reporting

Post-Processing Workflow

Manage worklists, track status, perform & notify image processing & CAD steps

Reporting Workflow

Manage worklists, track status, perform & notify diagnostic reporting steps

Billing

Charge Posting
Collect and post timely billable procedure details

Teaching Files & Clinical Trials Export
Standardize

Teaching/Research

Contents & Display

NM Image

Create, store, manage, retrieve & use NM image objects

Consistent Presentation of Images

Manage, retrieve & use objects for hardcopy and softcopy grayscale presentation

Documents

Manage, retrieve & use objects to record study evidence

Image Notes

Create, store, manage, retrieve & use objects to flag significant images

Simple Image and Numeric Reports

Manage simple diagnostic reports with optional images, measurements

Common Infrastructure

Integrating Information across health enterprises

Access to Radiology Information - Consistent access to images and reports

Portable Data for Imaging - Consistent access to images and reports on CD Media

ITI ATNA – Radiology Option (Replaces Basic Security)

IHE IT Infrastructure

Composable Integration Profiles

Cross-Enterprise User Assertion

User Attributes for Access Cntrl

Document Digital Signature

Attesting "true-copy and origin"

Audit Trail & Node Authentication

Centralized privacy audit trail and node to node authentication to create a secured domain.

Consistent Time

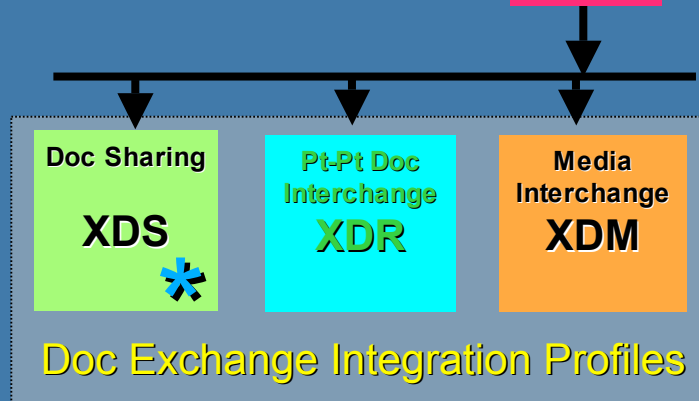
Coordinate time across networked systems

Personal White Pages

Enterprise User Authentication

* Adopted by HITSP

Scanned Doc
XDS-SD



Cross-Community Access

Querying and Retrieving Documents across multiple communities

(Intra-Enterprise only)

Retrieve Information for Display

Patient Demographics Query *

Patient Identifier Cross-referencing *

Map patient identifiers across independent identification domains

Notice of Document Availability *

Know about new information

Request Form for Data Capture *

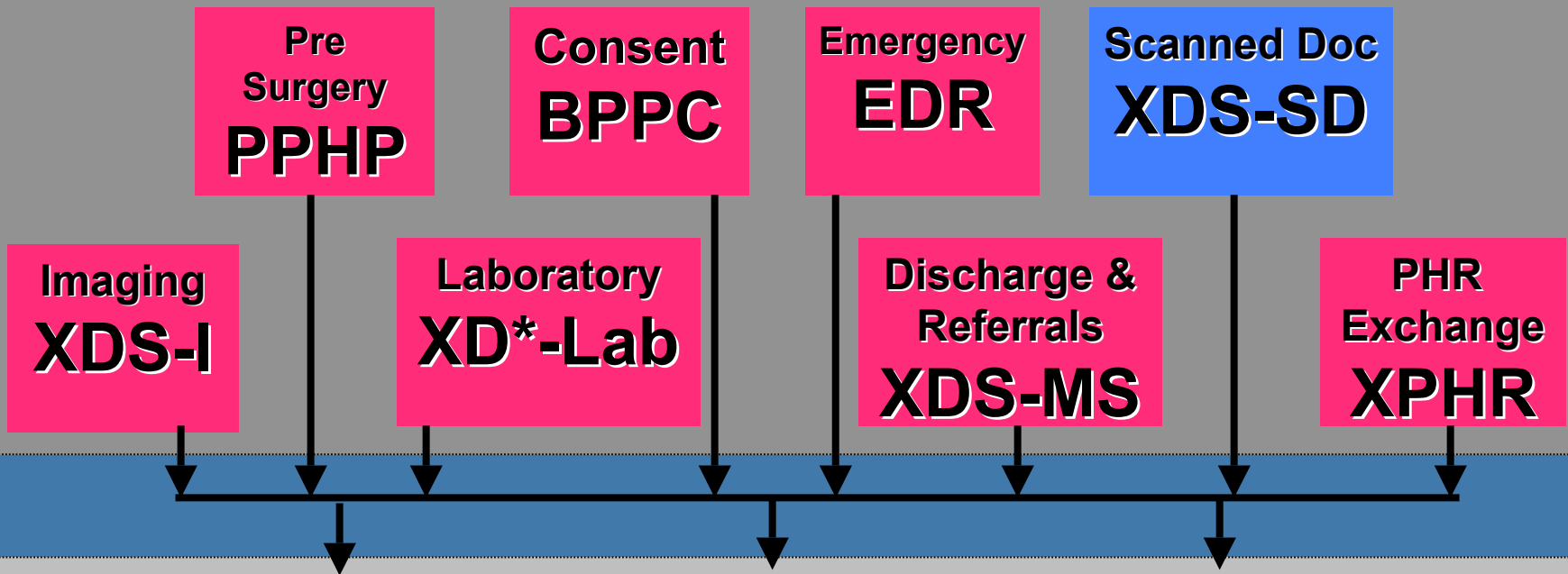
Remotely Manage Information Capture

Patient Administration Management

Patient Synchronized Applications

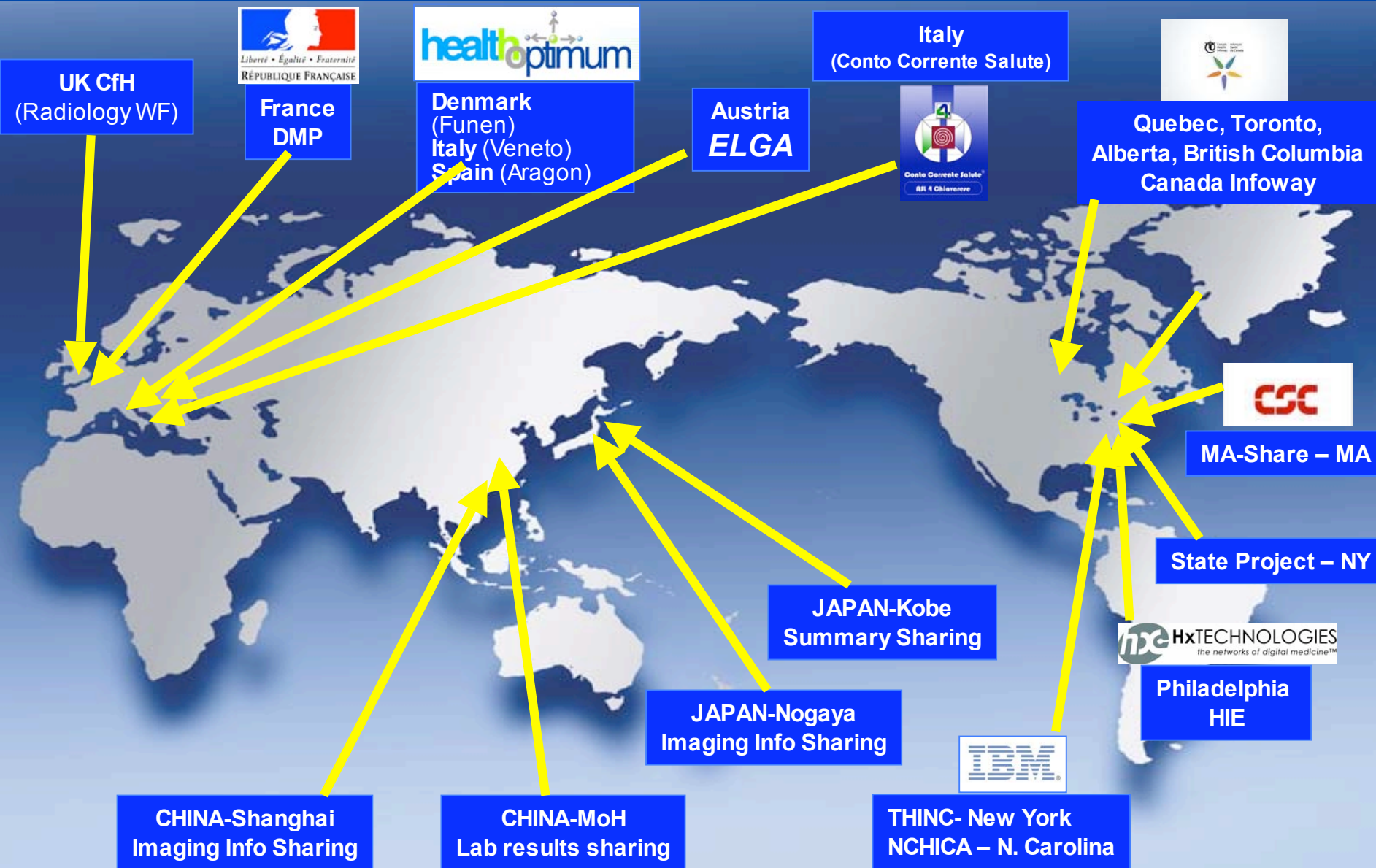
ITI Provides Foundation for Document Exchange

Doc Content Profiles



Doc Exchange Integration Profiles

IHE, the only sets of harmonized global standards already adopted by several national & regional projects



XCA: Cross Community Information Exchange White Paper

Developed concept of “community” and exchange of health information across communities

Released in August 2006

Available on www.ihe.net under “Resources – Technical Frameworks” then select IT Infrastructure

Defines two types of cross community information exchange:

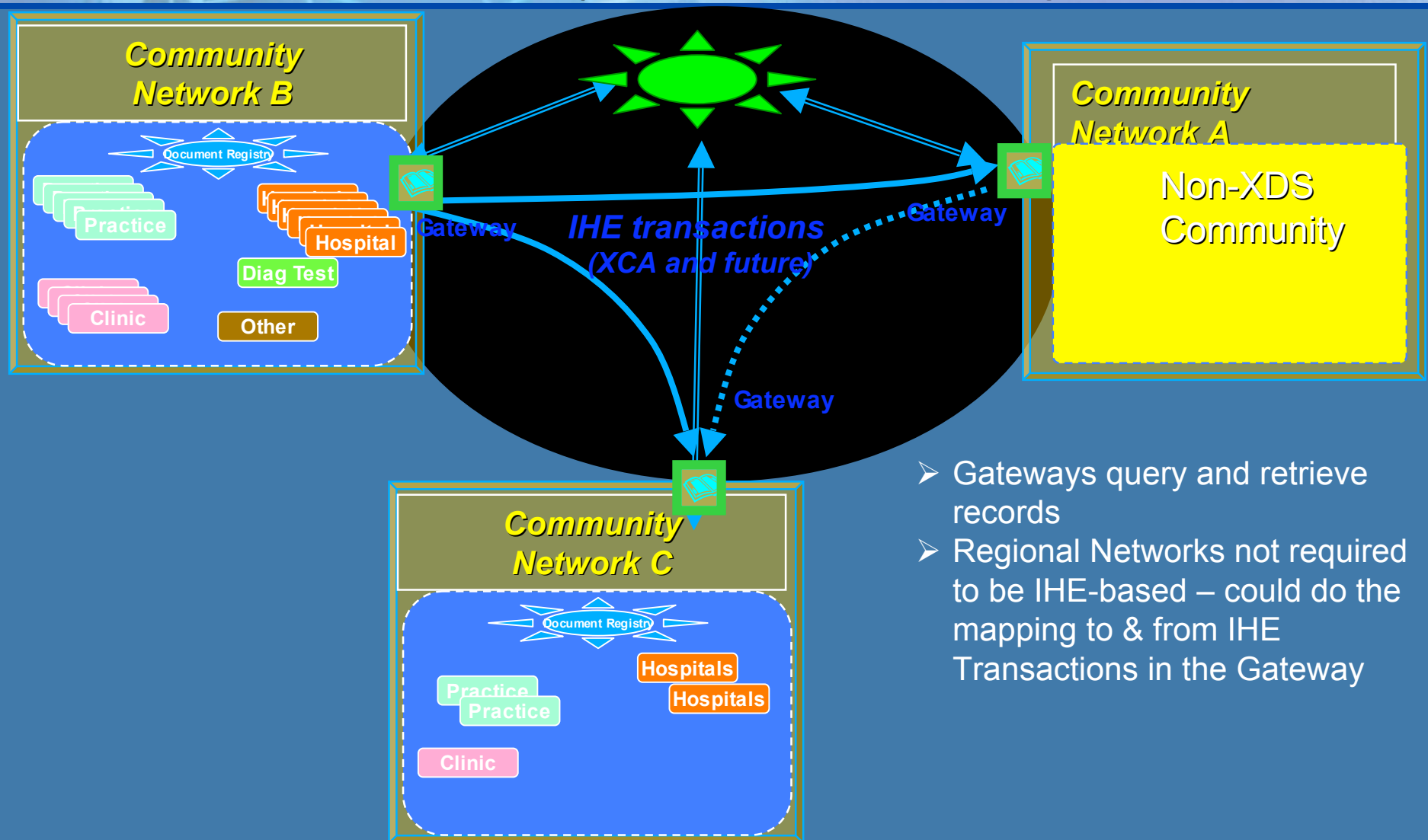
- Hierarchical
- Lateral

Defines a set of profiles which are useful in both types of community information exchanges.

The first step in realizing the vision of this whitepaper is the Cross Community Access profile

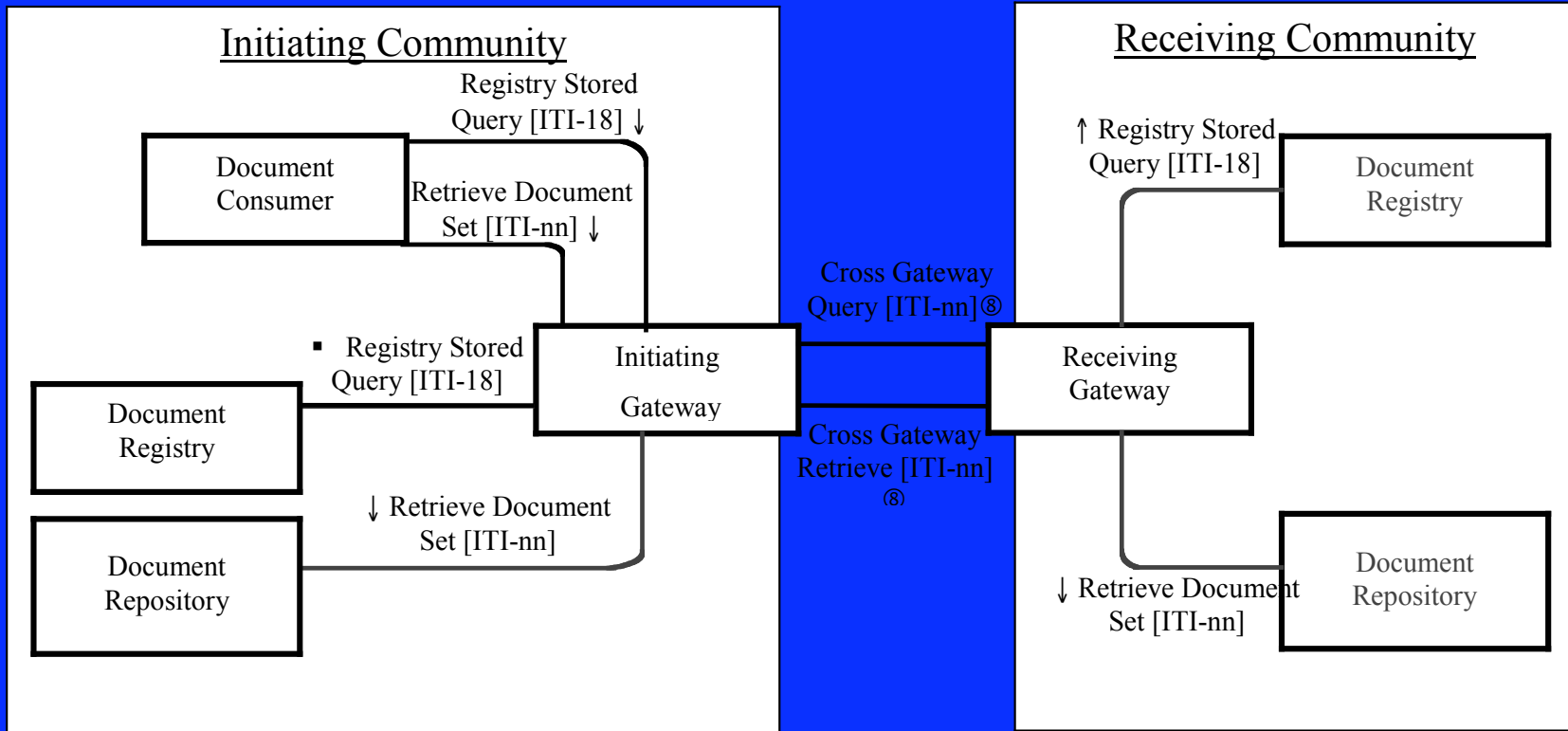
Hierarchical Exchange

From Cross Community Information Exchange White Paper



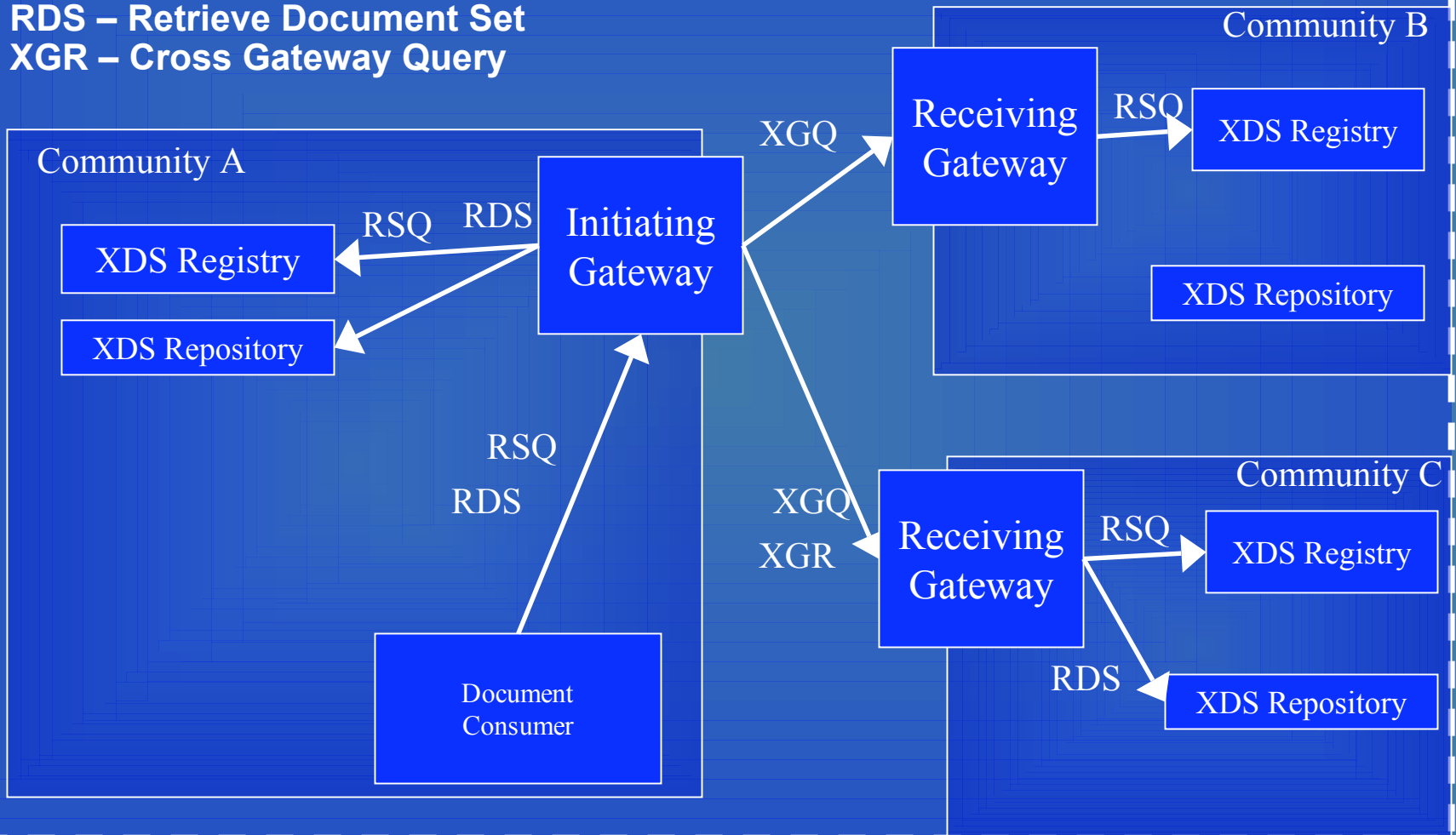
- Gateways query and retrieve records
- Regional Networks not required to be IHE-based – could do the mapping to & from IHE Transactions in the Gateway

XCA Transaction Diagram

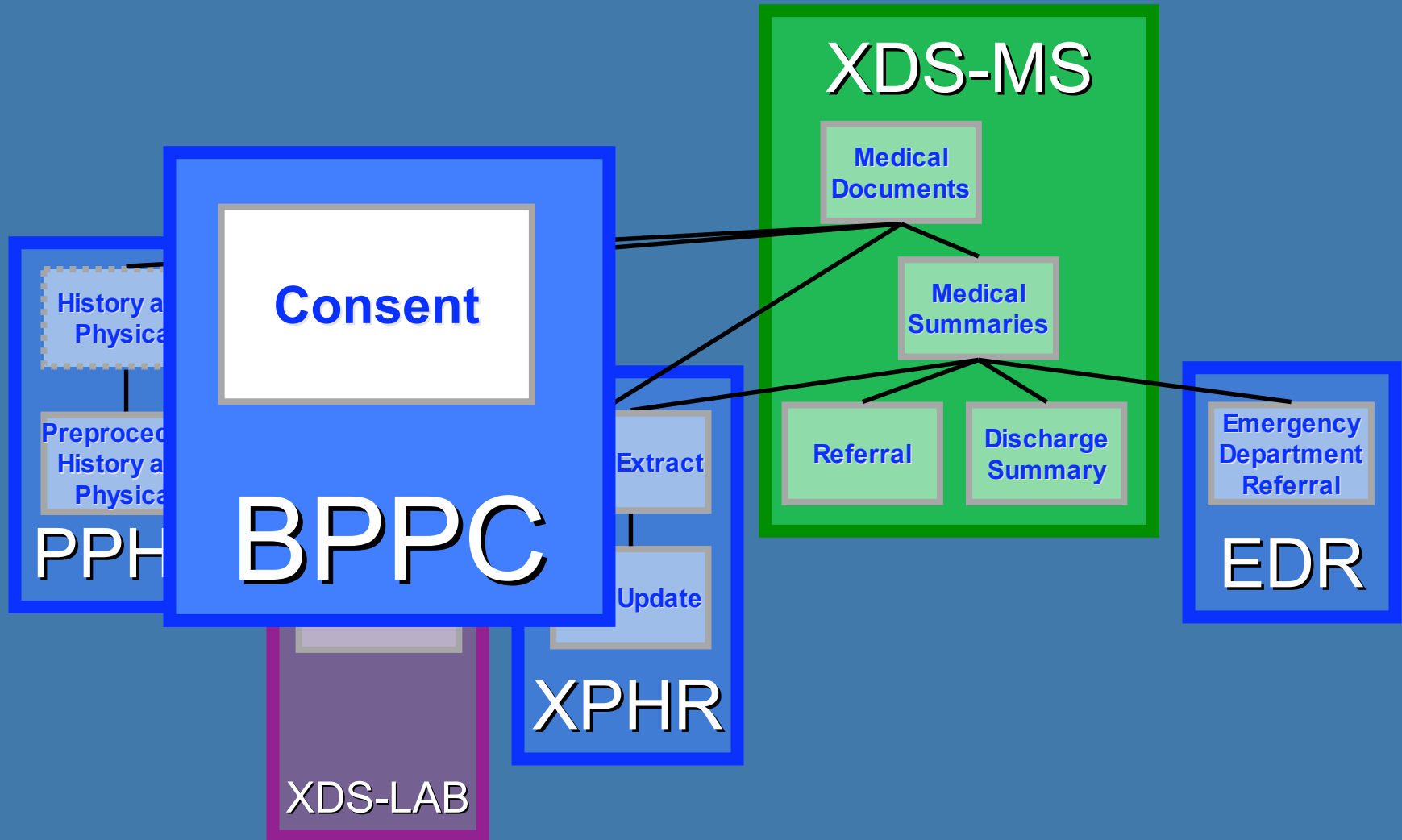


XCA Process Flow

RSQ – Registry Stored Query
XGQ – Cross Gateway Query
RDS – Retrieve Document Set
XGR – Cross Gateway Query



BPPC: Basic Patient Privacy Consents



Consent Document

XDS Metadata:

Consent Document
Digital Signature

XDS-MS + XDS-BPPC + XDS-SD

Structured and Coded CDA Header

Patient, Author, Authenticator, Institution,
Time of Service, etc.

Structured Content with coded sections:

- Scanned Document details
- Privacy Consent details
 - Policy 9.8.7.6.5.4.3.2.1

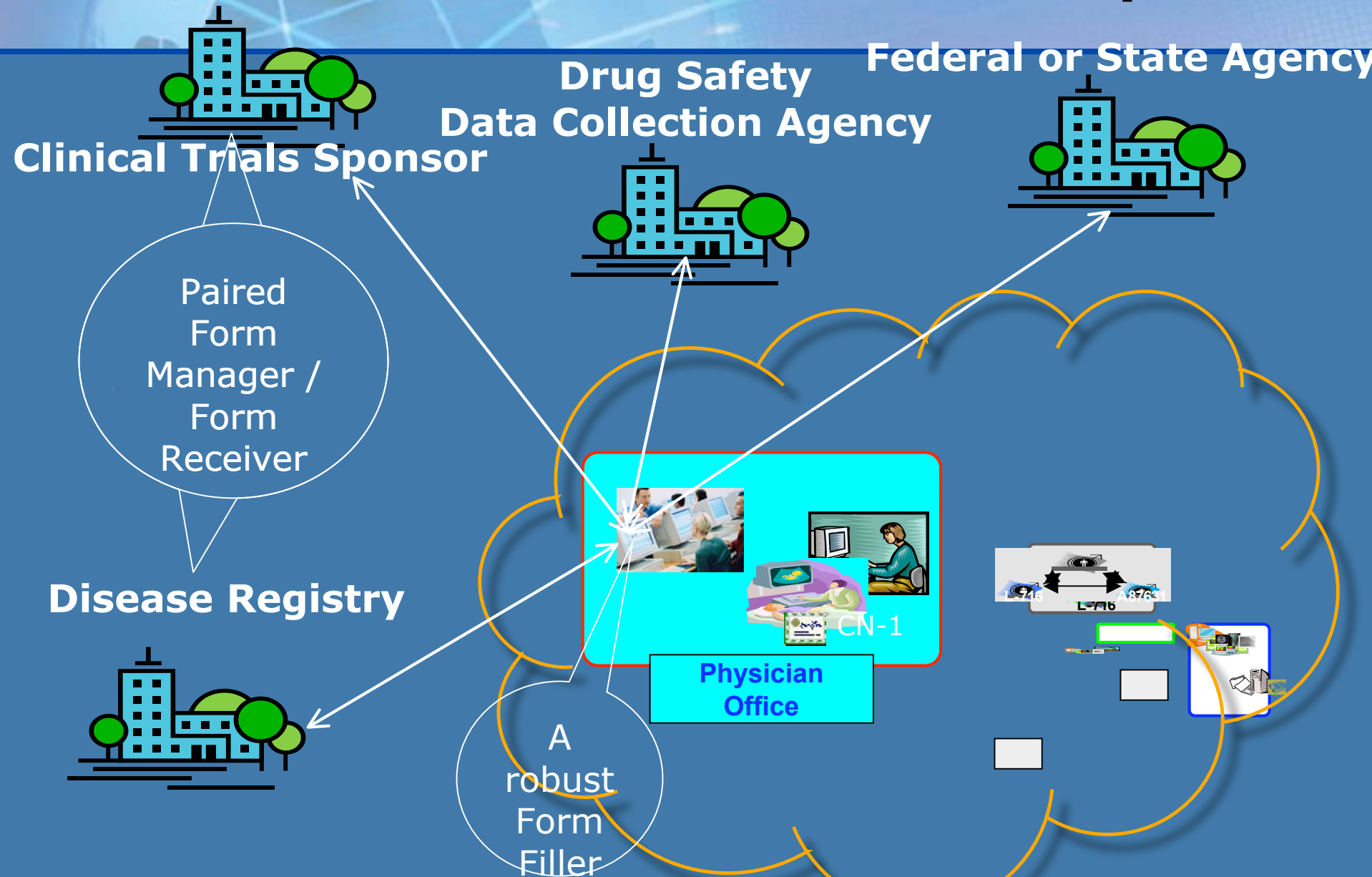
Base64 encoded

Sample consent: by A Patient. It's OK



IHE-DSG – Digital Signature
Signature value
Pointer to Consent document

RFD: Retrieve Form for Data Capture



Sonstiges

● ***IHE-D Infotag***

- Wahrscheinlich **01.10.2007** in Frankfurt / ZVEI-Saal
- Themen:
 - Bericht aus den IHE-EUR Committees
 - ITI (neue Profile, WebServices, EPRs, PCC)
 - Card (data harvesting)
 - Labor (POCT)
 - Rad (neue Profile & Mamma-Profil)
- Informationen beachten, Interessenten bitte bei binder@zvei.org melden!
- Weitere Informationen werden unter www.ihe-d.org erscheinen

Danke für Ihre Aufmerksamkeit !



WWW.IHE.NET