

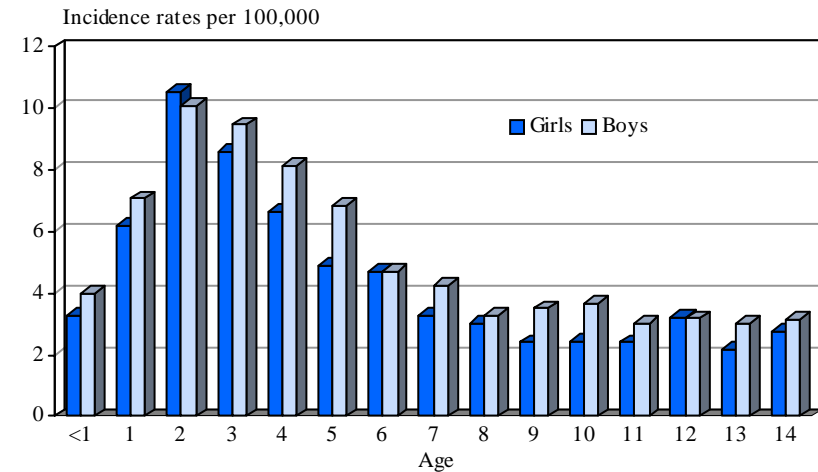
2. Leukaemias

Total number of cases in the registry (1980-2004): 12716
 5-, 10-, and 15-year survival probabilities (life table estimates according to (8)): 77 %, 73 %, and 71 %

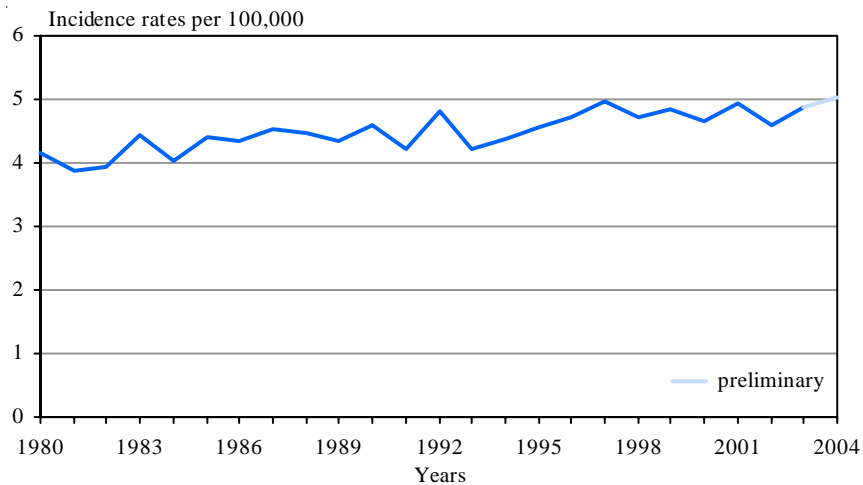
Selected characteristics (Germany: 2000-2004)

Relative frequency:	2922 / 8948 =32.7%	
Incidence rates (per 100,000):	age-standardized	cumulative
girls (n = 1312)	4.5	66.6
boys (n = 1610)	5.2	77.3
total (n = 2922)	4.8	72.1
Sex ratio (boys to girls):	1.2 : 1	
Age-specific incidence rates (per 100,000):		
less than 1 year (n = 134)	3.7	
1 - 4 years (n = 1294)	8.4	
5 - 9 years (n = 824)	4.1	
10 - 14 years (n = 670)	2.9	
Age:	25%-quantile	2 11 /12 years
	median	5 2 /12 years
	75%-quantile	9 6 /12 years
Relative frequency of trial patients:	100 %	

Age- and sex-specific incidence rates (Germany: 2000-2004)



Age-standardized annual incidence rates (Germany: 1980-2004)



Survival probabilities for lymphoid and non-lymphocytic leukaemias (Germany: 1980-2004)

