

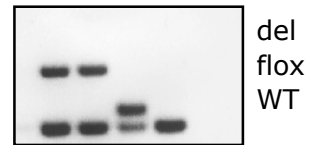
**Rosa 26 / IL17F-RFP/IL17RA**

	1	5	10	20	25	40	70
H2O	22	110	220	440	550	880	1540
10x buffer <b>without</b> MgCl2	3	15	30	60	75	120	210
50mM MgCl2	1,5	7,5	15	30	37,5	60	105
dntp 25mmolar	0,3	1,5	3	6	7,5	12	21
FW 10 µmolar	1	5	10	20	25	40	70
REV1 10 µmolar	0,5	2,5	5	10	12,5	20	35
REV2 10 µmolar	0,5	2,5	5	10	12,5	20	35
Taq 1u/µl	0,5	2,5	5	10	12,5	20	35
<b>Sum MM</b>	<b>29,3</b>						
+ DNA	0,7						

95°C	5min	
95°C	30 s	
58°C	40 s	35X
72°C	45 s	
72°C	10min	
4°C	for ever	

**RosaFA** aaagtcgctctgagttgttat wt tg  
**RosaRA** ggagcgggagaaatggatag tg  
**SpliAcB** catcaaggaaaccctggactactg wt  
 expected Band: Rosa WT: 620 bp  
 Rosa TG: 250 bp

**IL17RA typing for1:** GGCAGCCTTTGGGATCCCAAC  
**IL17RA typing rev1:** CTACTCTTCTCACCAGCGCGC  
**IL17RA 5'for6:** GTGCCACAGAGTGTCTTCTGT  
 expected Band: IL17RA del : 478 bp  
 IL17RA flox : 377 bp  
 IL17RA WT : 336 bp



**IL17F-RFP -F** 5 - ACATTGCCACCACCAGGGCTC -3  
**IL17F-RFP -R1** 5 - CCCATGGGGAAGTGGAGCGGTTTC-3  
**IL17F-RFP -R2 neu AH** 5 - CGGCTTCGGCCAGTAACGTTAGG -3  
 expected Band: IL17F KO/RFP+: 378bp  
 IL17F WT: 263 bp